

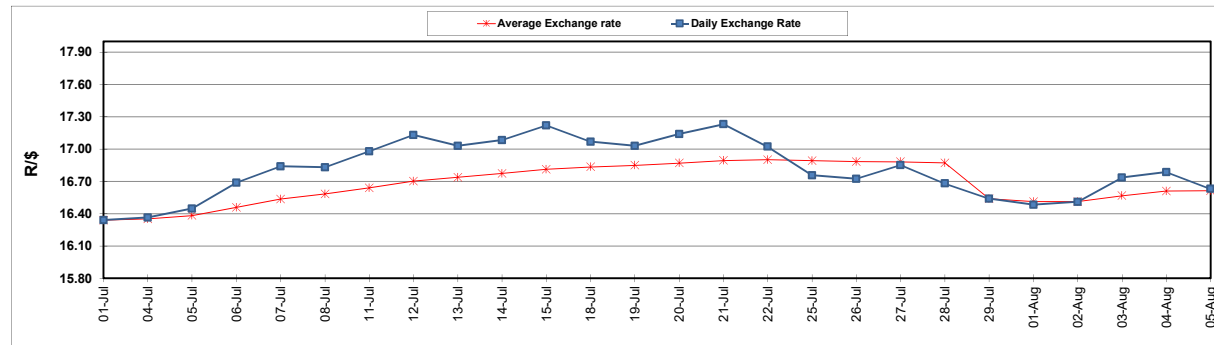
	PETROL 95 ULP	PETROL 93 ULP & LRP	DIESEL 0.05%	DIESEL 0.005%	ILL. PAR.
GAUTENG PUMP PRICE (SA c/l) AS FROM 03/08/2022	2,542.000	2,499.000	-	-	-
WHOLESALE PRICE (SA c/l) AS FROM 03/08/2022	-	-	2,452.440	2,461.840	1,842.288
SINGLE NATIONAL MAXIMUM RETAIL PRICE	-	-	-	-	2,431.000
BASIC FUEL PRICE - 05/08/2022 (SA c/l)	1,214.439	1,189.096	1,389.829	1,407.603	1,447.668
PRESS RELEASE CONTRIBUTION TO BFP 03/08/2022 - 05/08/2022 (SA c/l)	1,482.410	1,439.410	1,600.630	1,610.030	1,624.128
UNIT OVER/(UNDER) RECOVERY - 05/08/2022 (SA c/l)	267.971	250.314	210.801	202.427	176.460
AVERAGE BASIC FUEL PRICE 29/07/2022 - 05/08/2022	1,302.067	1,272.641	1,440.994	1,454.560	1,496.357
AVERAGE UNIT OVER/(UNDER) RECOVERY 29/07/2022 - 05/08/2022	283.844	270.269	241.137	238.471	199.771

ANALYSIS MOVEMENT OF AVERAGE OVER/(UNDER) RECOVERY

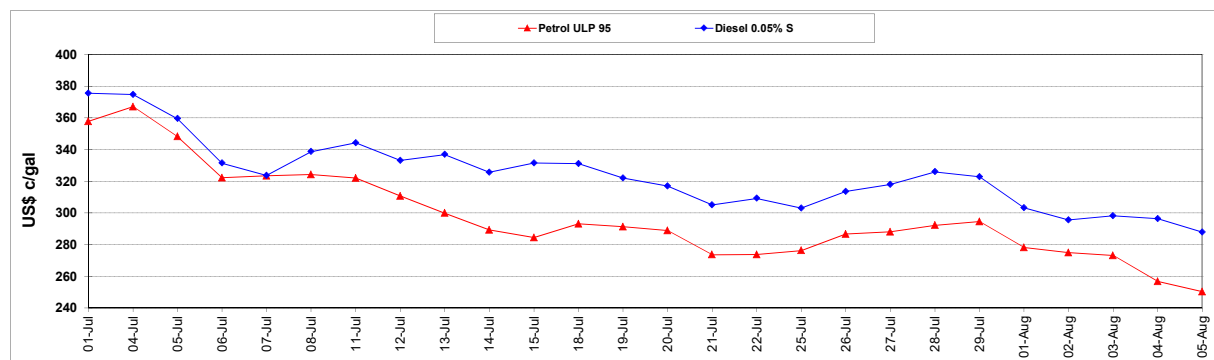
	PETROL 95	PETROL 93	DIESEL 0.05%	DIESEL 0.005%	ILL. PAR.
- MOVEMENT IN INTERNATIONAL PRODUCT PRICES	263.599	250.483	218.732	215.855	176.506
- MOVEMENT IN EXCHANGE RATE	20.244	19.786	22.404	22.615	23.265
AVERAGE UNIT OVER/(UNDER) RECOVERY 29/07/2022 - 05/08/2022	283.844	270.269	241.137	238.471	199.771

R/\$ EXCHANGE RATE - (R/\$16.6293 - 05/08/2022)

EXCHANGE RATE USED IN BASIC FUEL PRICE



INTERNATIONAL PRODUCT PRICES OF BASKET USED IN BASIC FUEL PRICE



BASIC FUEL PRICE IN SA CENTS PER LITRE

